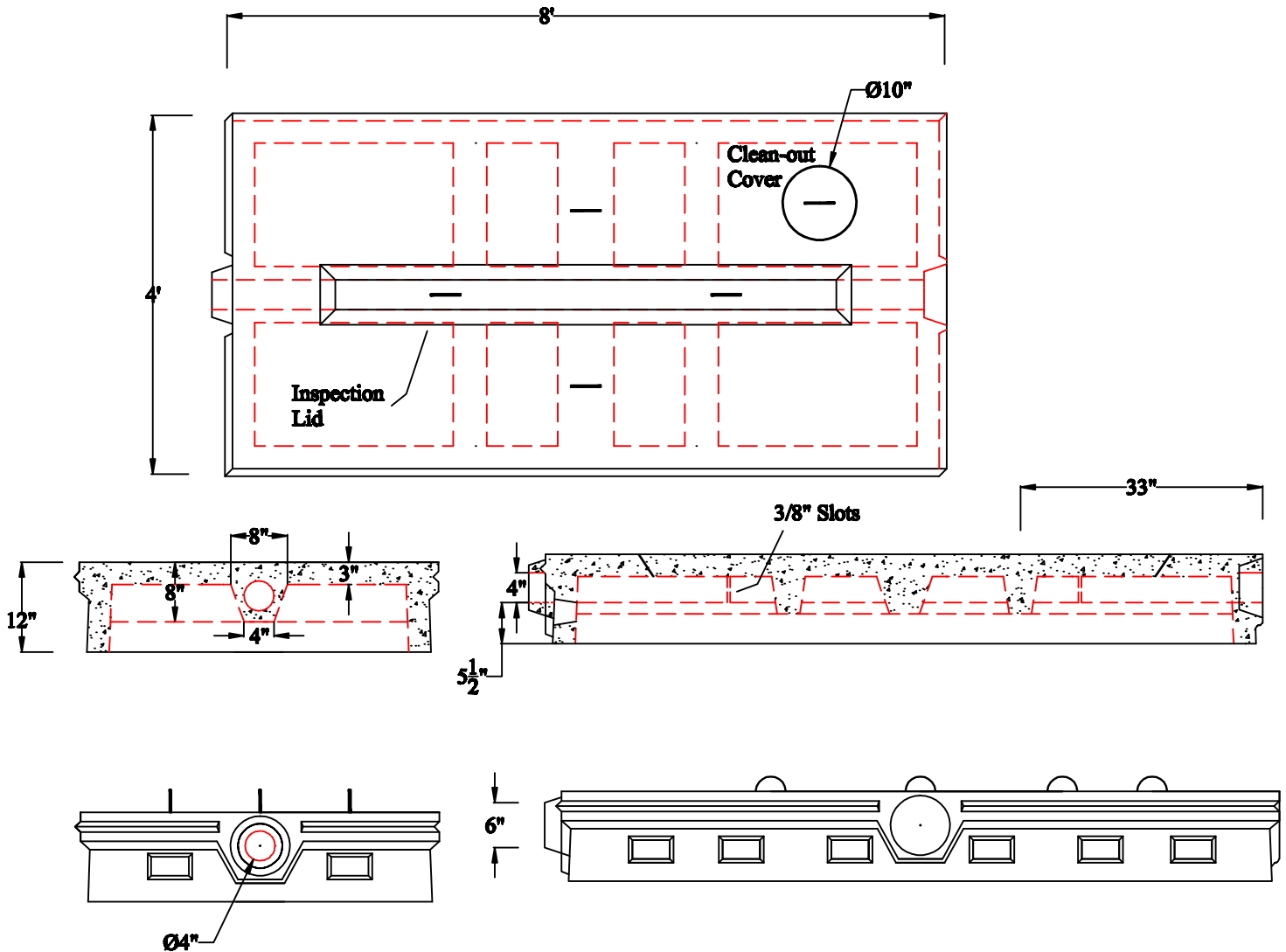


J.B. CONCRETE PRODUCTS, INC.

12" LEACHING CHAMBER - TYPE "L"

DATE:
Jan. 3, 2008

Drawing I.D.
12_FD_L



Notes:

1. MINIMUM CONCRETE COMPRESSION STRENGTH 5,000 PSI AFTER 28 DAYS.
2. H₂O LOADING AVAILABLE.

1 Arch St
PO Box 387
Putnam, CT 06260
(860)928-9365
F (860)928-9452
www.jbconcreteproducts.com