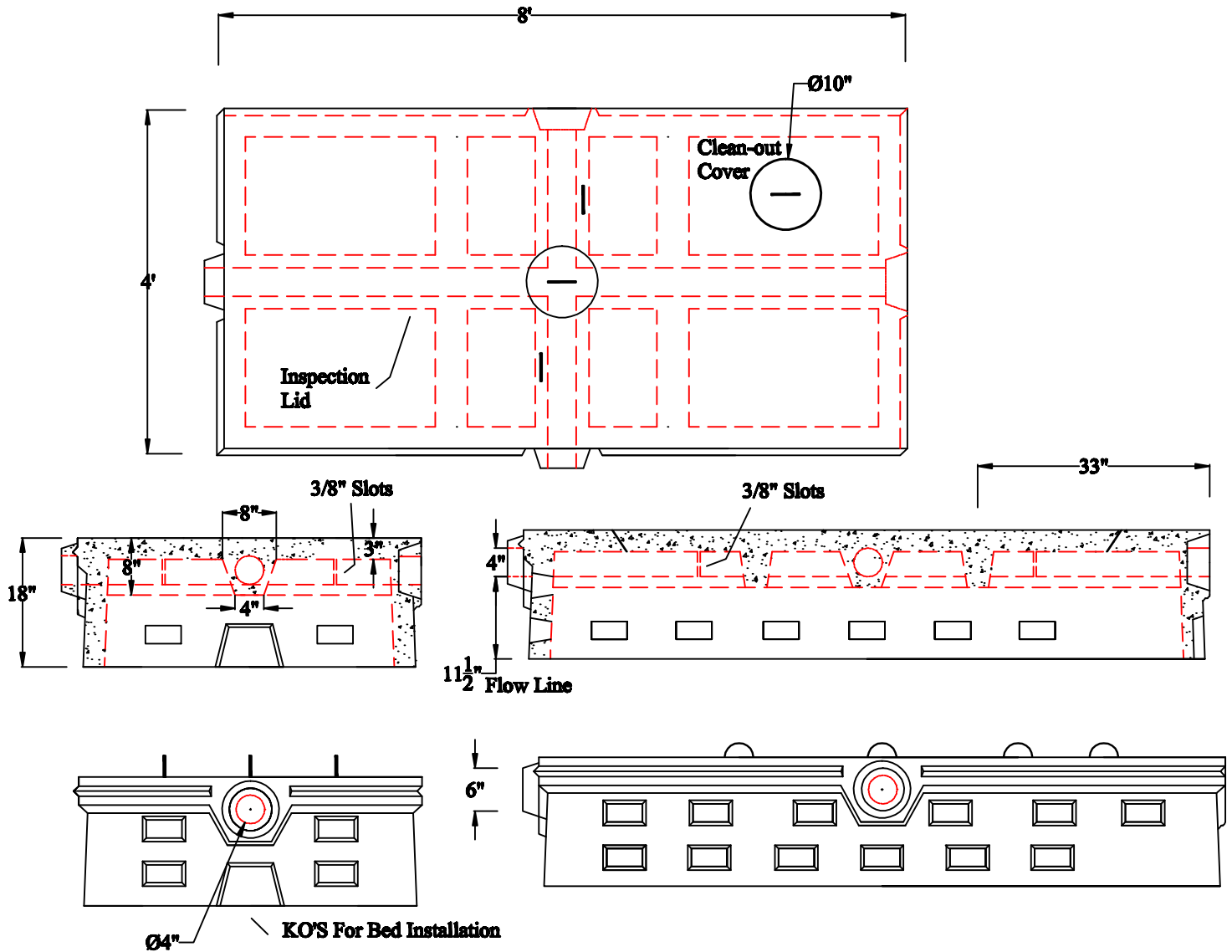


# J.B. CONCRETE PRODUCTS, INC.

18" LEACHING CHAMBER - TYPE "D"

DATE:  
Jan. 3, 2008

Drawing I.D.  
18\_FD\_D



## Notes:

1. MINIMUM CONCRETE COMPRESSION STRENGTH 5,000 PSI AFTER 28 DAYS.
2. H<sub>2</sub>O LOADING AVAILABLE.
3. 4 DIRECTION FLOW

1 Arch St  
PO Box 387  
Putnam, CT 06260  
(860)928-9365  
F (860)928-9452  
[www.jbconcreteproducts.com](http://www.jbconcreteproducts.com)