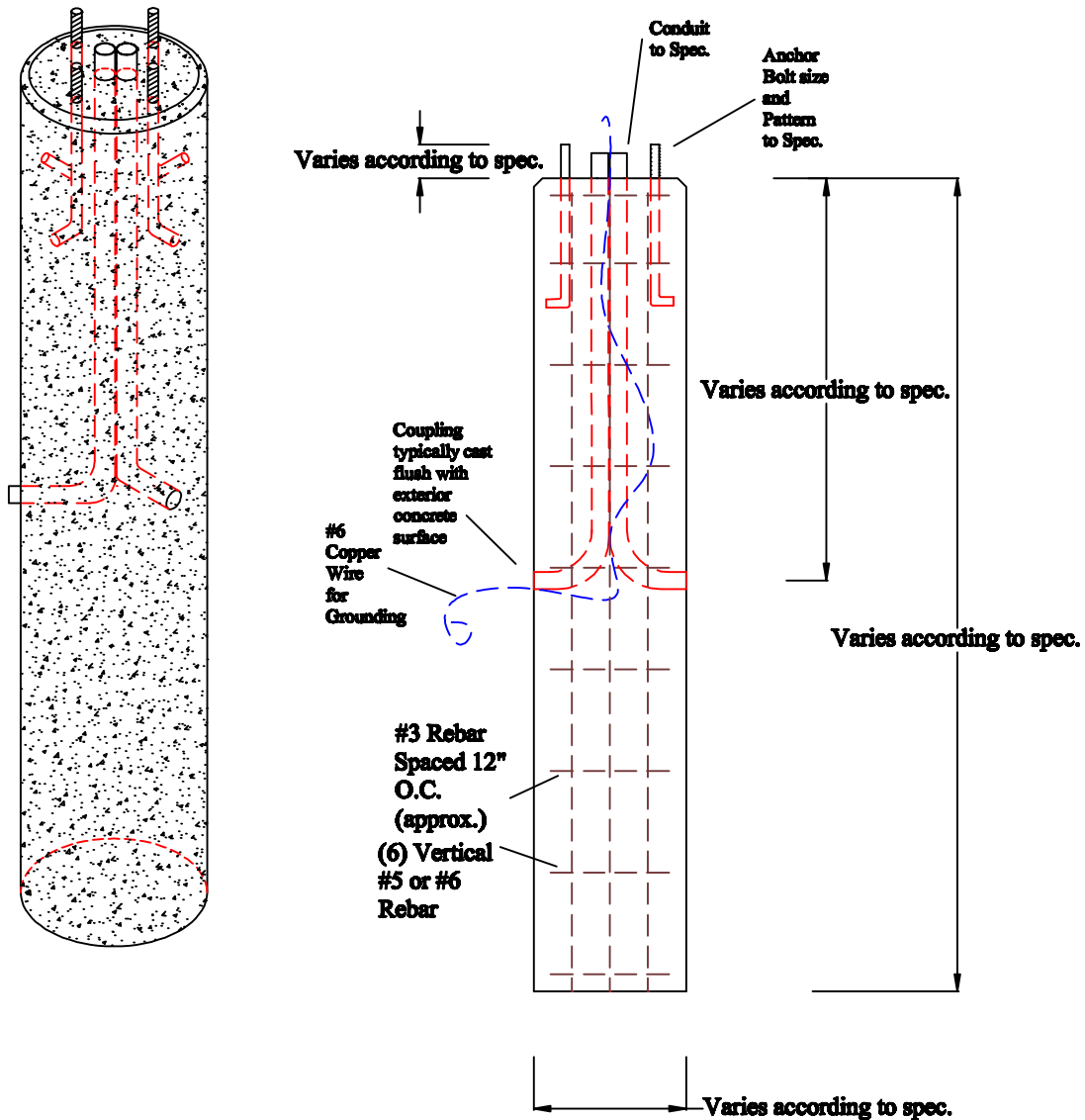


J.B. CONCRETE PRODUCTS, INC.

LIGHT POLE BASE

DATE:
Jan. 3, 2008

Drawing I.D.
L.P.B._standard



Notes:

1. HEIGHT AND WIDTH (18, 24" Dia.) VARIES PER JOB REQUIREMENTS
2. ANCHOR BOLTS, CONDUIT, GROUND WIRE, AND COUPLINGS SUPPLIED BY OTHERS
3. MINIMUM CONCRETE COMPRESSION STRENGTH 5,000 PSI AFTER 28 DAYS.
4. ORDERS COMPLETED IN ACCORDANCE TO LIGHT POLE BASE SUBMITTAL FORM AND ENGINEER SPECS.
5. STEEL REINFORCEMENT COMPRISED OF GRADE-60 REBAR TO CONFORM TO DESIGN SPEC
6. TYPICAL REINFORCEMENT SHOWN USED UNLESS OTHERWISE SPECIFIED.
7. LIFTING HANDLE LOCATIONS DEPENDENT ON HEIGHT OF BASE.

1 Arch St
PO Box 387
Putnam, CT 06260
(860)928-9365
F (860)928-9452
www.jbconcreteproducts.com