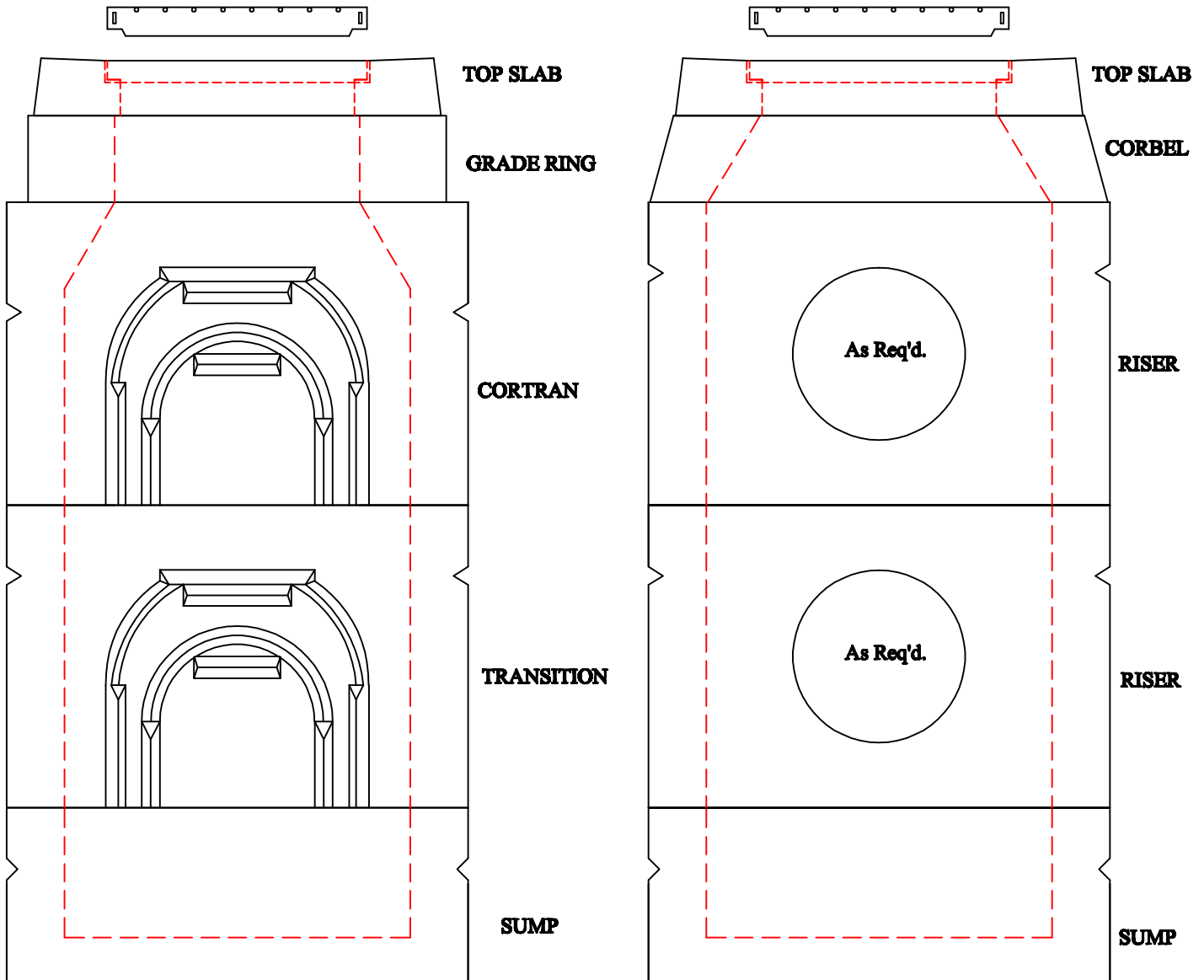


J.B. CONCRETE PRODUCTS, INC.

CT CATCH BASINS - STRUCTURE MODEL

DATE:
Jan. 3, 2008

Drawing I.D.
CTCB_STRUCTURE



STRUCTURE WITH KNOCKOUTS
(STANDARD)

STRUCTURE WITH HOLES FORMED TO SPEC.
(OPTIONAL)

Notes:

1. MINIMUM CONCRETE COMPRESSION STRENGTH 5,000 PSI AFTER 28 DAYS.
2. ALL COMPONENTS H-20 RATED.
3. SAMPLE STRUCTURES SHOWN.
4. ACTUAL STRUCTURES CONFIGURED TO ENGINEERING PLANS.
5. SEE STRUCTURE DETAILS FOR COMPONENT DIMENSIONS.

1 Arch St
PO Box 387
Putnam, CT 06260
(860)928-9365
F (860)928-9452
www.jbconcreteproducts.com