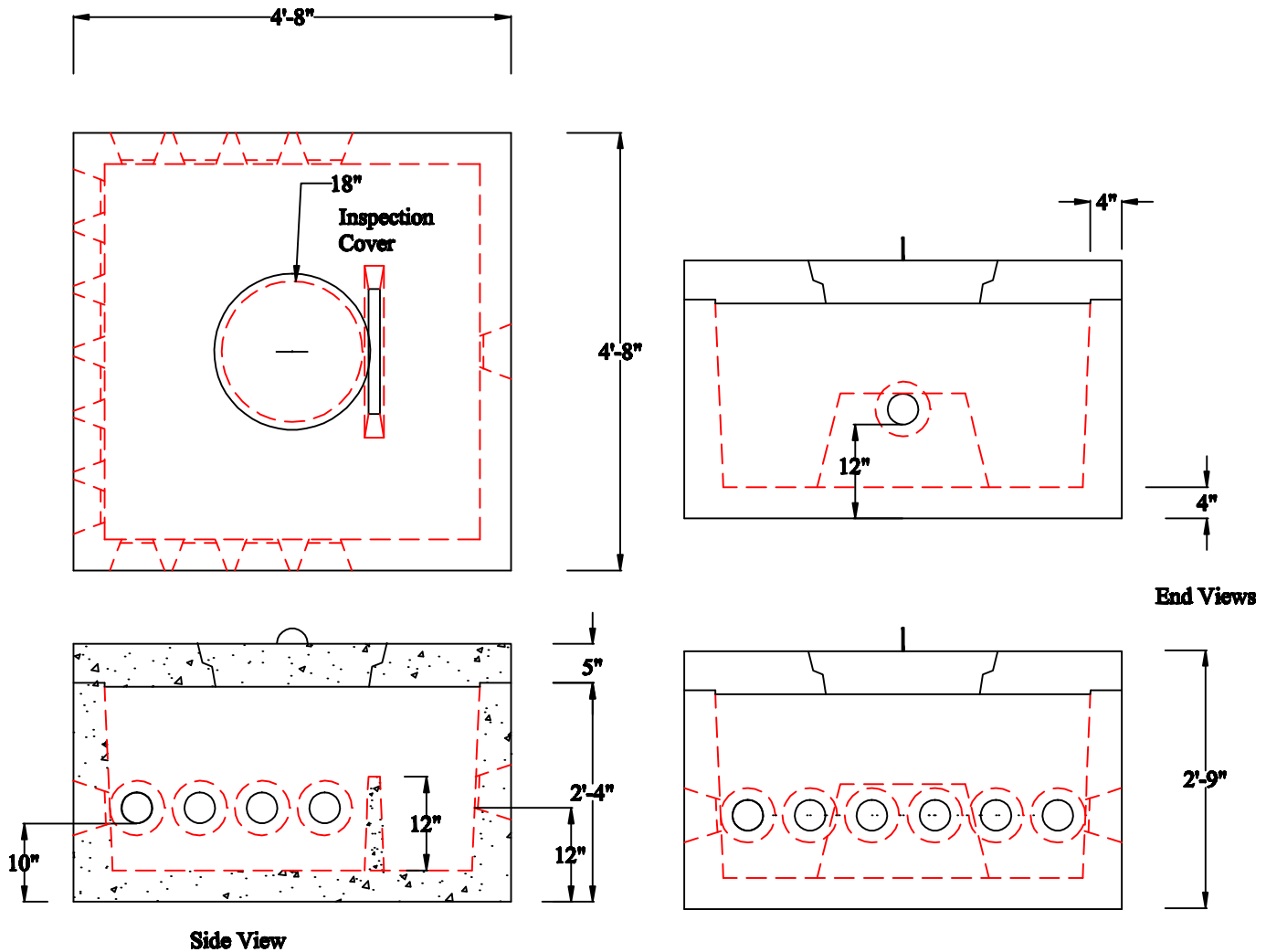


# J.B. CONCRETE PRODUCTS, INC.

DB14 - 15 HOLE DISTRIBUTION BOX

DATE:  
Jan. 3, 2008

Drawing I.D.  
DB14



## Notes:

1. STATE APPROVED INLET AND OUTLET PIPE SEALS
2. 14 OUTLETS(4") AND 1 INLET(4-6")
3. MINIMUM CONCRETE COMPRESSION STRENGTH 5,000 PSI AFTER 28 DAYS.
4. H2O LOADING.

1 Arch St  
PO Box 387  
Putnam, CT 06260  
(860)928-9365  
F (860)928-9452  
[www.jbconcreteproducts.com](http://www.jbconcreteproducts.com)