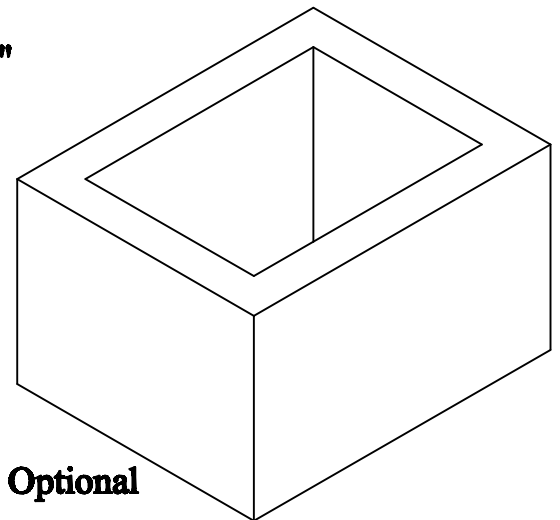
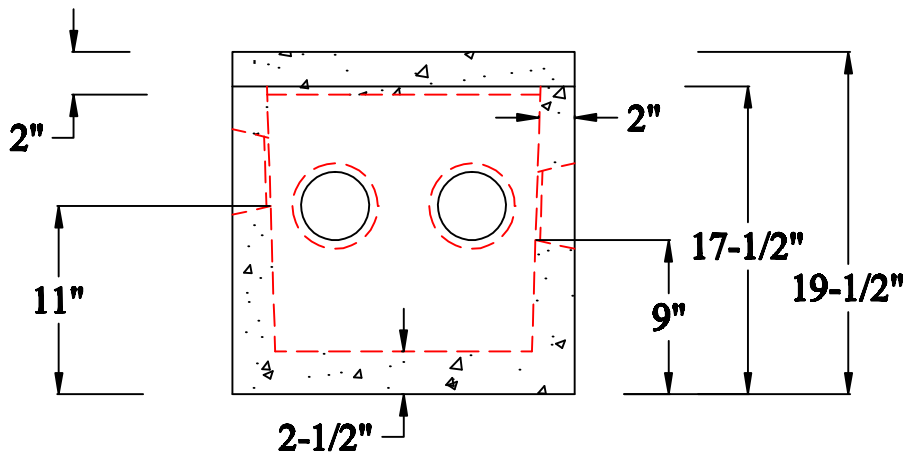
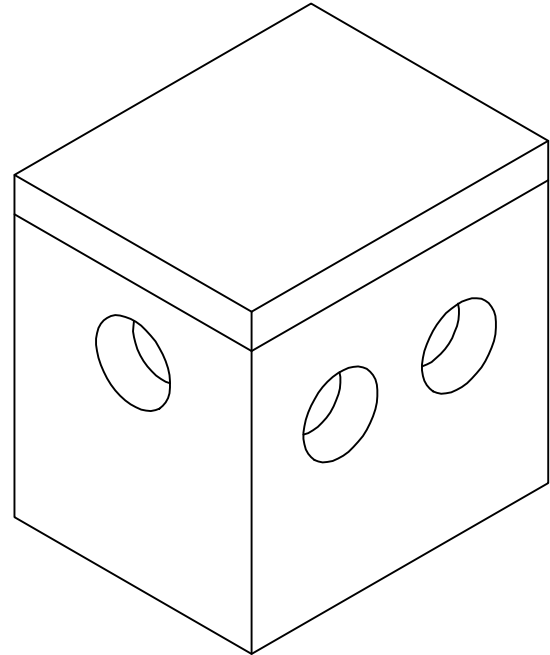
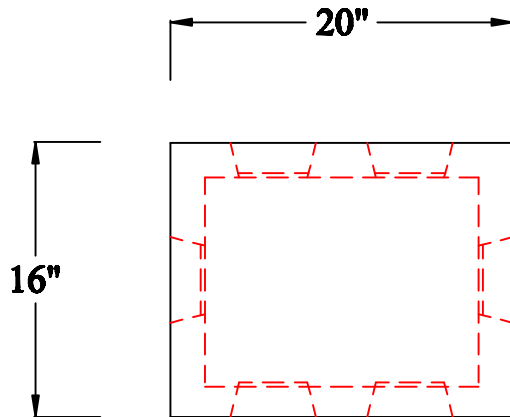


# J.B. CONCRETE PRODUCTS, INC.

DB 5 - MA 6 HOLE DISTRIBUTION BOX

DATE:  
Jan. 3, 2008

Drawing I.D.  
DB5\_MA



12" Riser Optional

## Notes:

1. MINIMUM CONCRETE COMPRESSION STRENGTH 5,000 PSI AFTER 28 DAYS.
2. ONE (1) 4" INLET, FIVE (5) 4" OUTLETS
3. STATE APPROVED INLET AND OUTLET PIPE SEALS.
4. 12" RISERS AVAILABLE.

1 Arch St  
PO Box 387  
Putnam, CT 06260  
(860)928-9365  
F (860)928-9452  
[www.jbconcreteproducts.com](http://www.jbconcreteproducts.com)