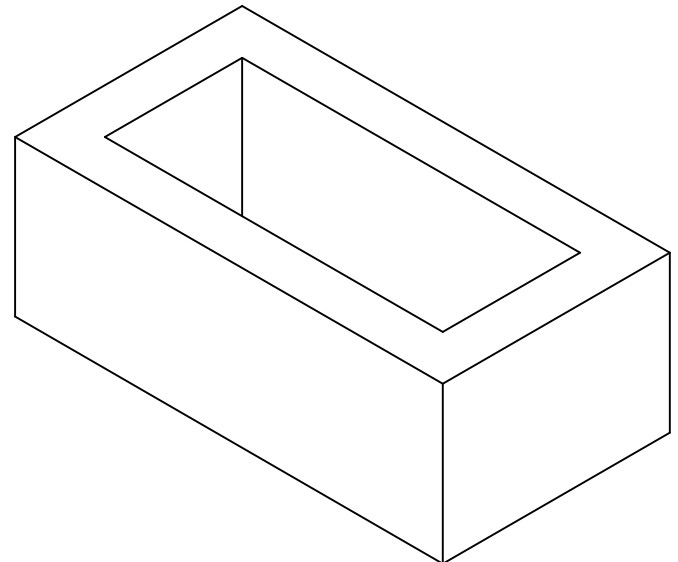
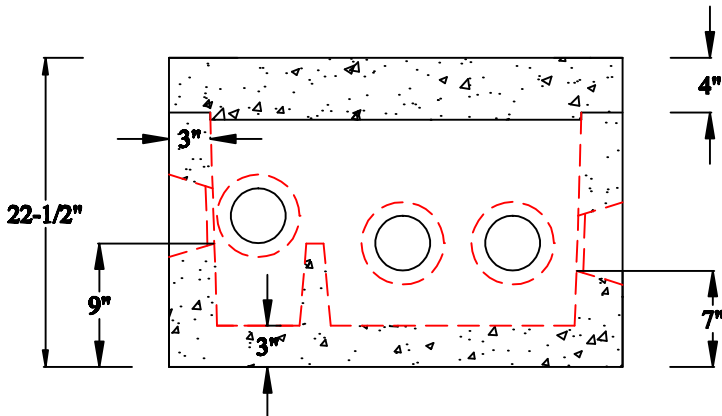
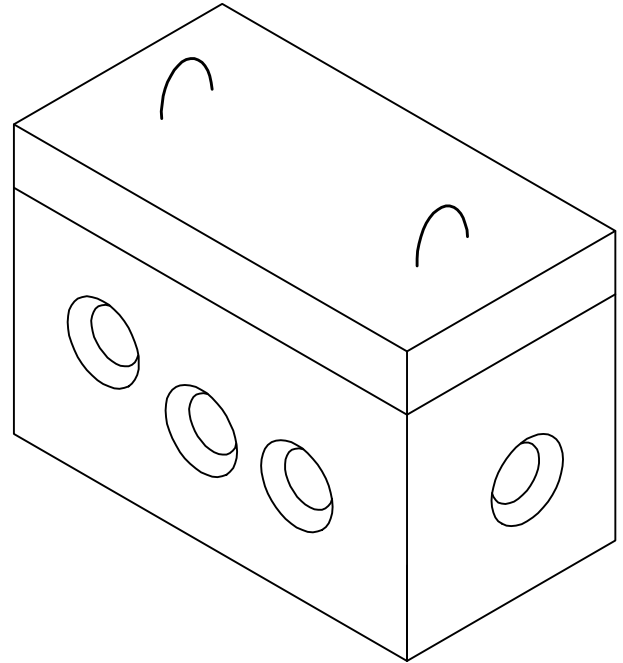
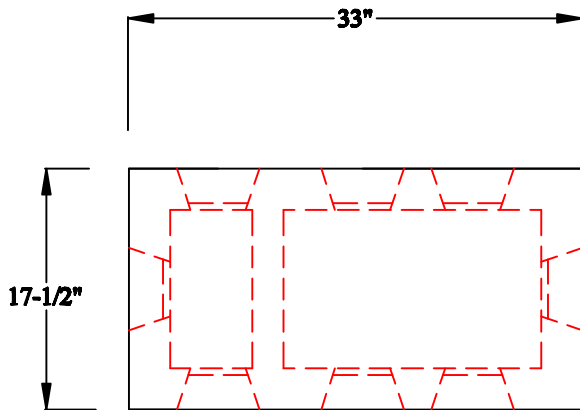


J.B. CONCRETE PRODUCTS, INC.

DB5 - 3 INLET- RI H2O DISTRIBUTION BOX

DATE:
Jan. 3, 2008

Drawing I.D.
DB5_RIH20



12" Riser Optional

Notes:

1. STATE APPROVED INLET AND OUTLET PIPE SEALS
2. 5 OUTLETS(4") AND 3 INLET(4")
3. MINIMUM CONCRETE COMPRESSION STRENGTH 5,000 PSI AFTER 28 DAYS.
4. H2O LOADING.
5. 12" RISERS AVAILABLE.

1 Arch St
PO Box 387
Putnam, CT 06260
(860)928-9365
F (860)928-9452
www.jbconcreteproducts.com