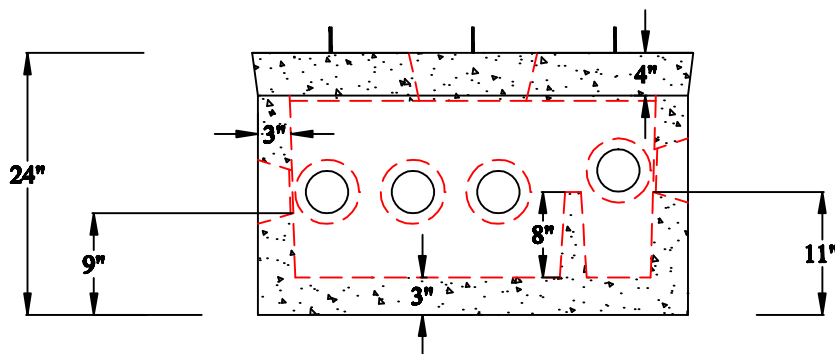
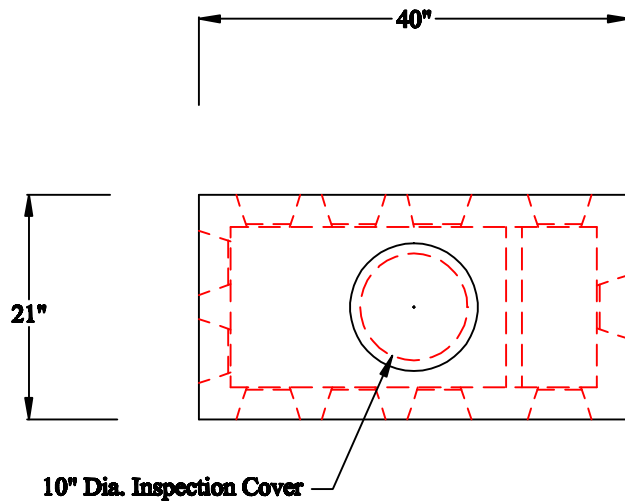
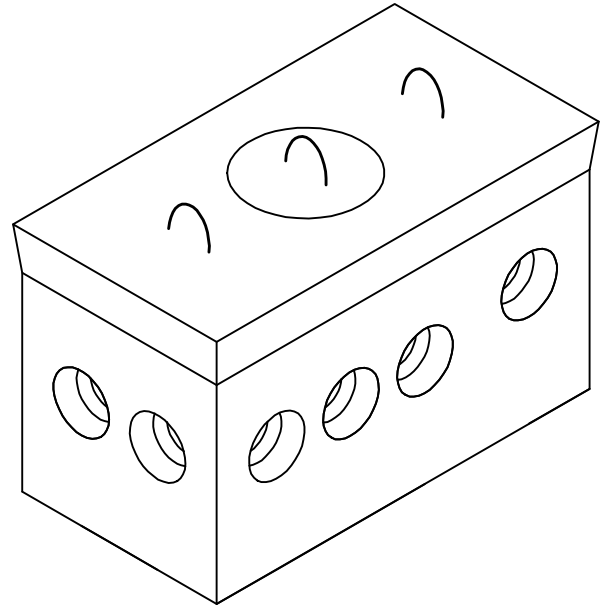


J.B. CONCRETE PRODUCTS, INC.

DB8 - 3 INLETS, 8 OUTLETS

DATE:
Jan. 3, 2008

Drawing I.D.
DB8_H20



Notes:

1. MINIMUM CONCRETE COMPRESSION STRENGTH 5,000 PSI AFTER 28 DAYS.
2. THREE (3) 4" INLETS, EIGHT (8) 4" OUTLETS.
3. STATE APPROVED INLET AND OUTLET PIPE SEALS
4. H2O LOADING

1 Arch St
PO Box 387
Putnam, CT 06260
(860)928-9365
F (860)928-9452
www.jbconcreteproducts.com