

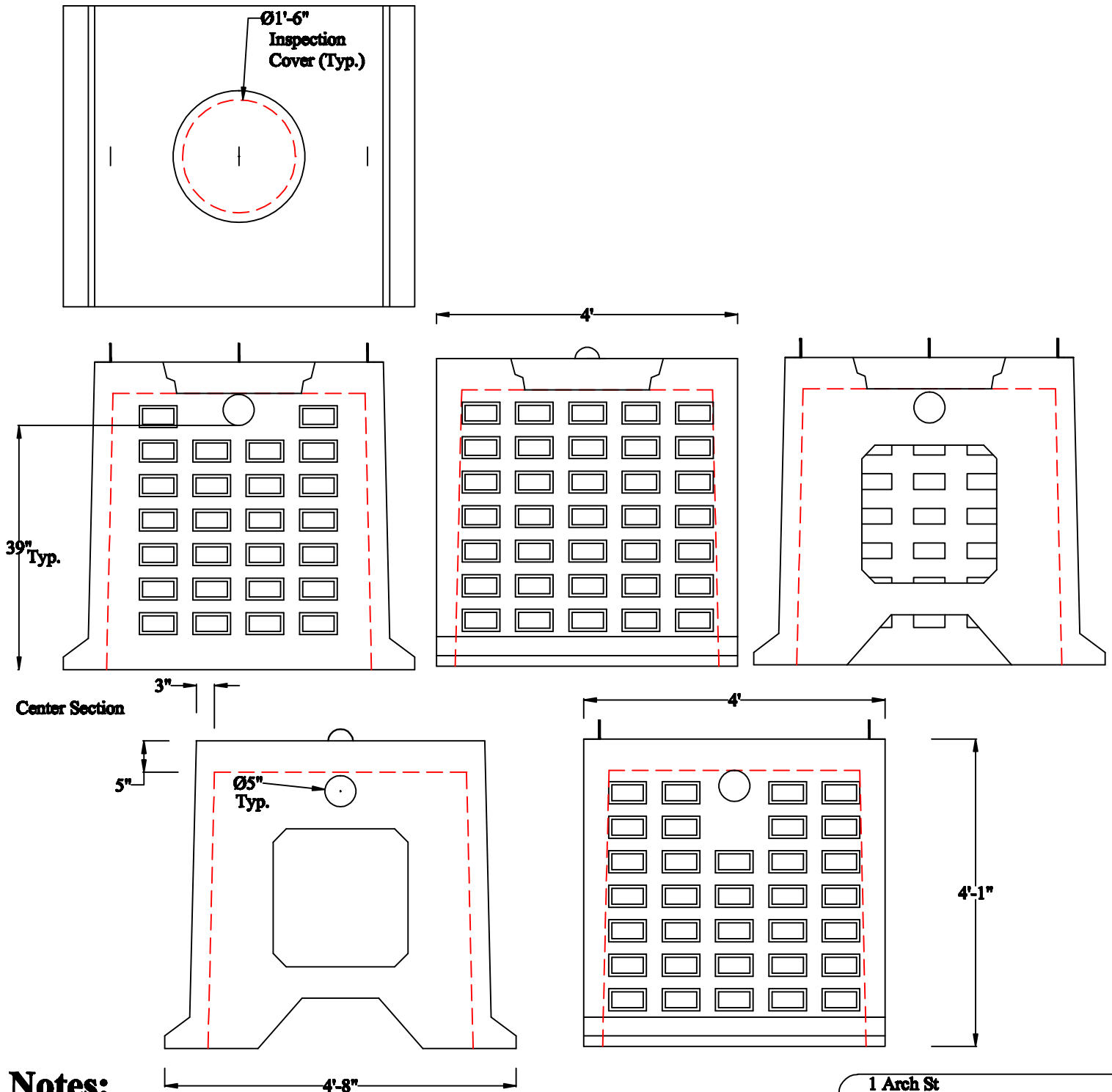
J.B. CONCRETE PRODUCTS, INC.

4'x4'x4' GALLEY

DATE:
Jan. 3, 2008

End Section

Drawing I.D.
GALLEY_4



Notes:

1. H2O Loading Available
2. Minimum concrete compression strength 5,000 PSI after 28 days.
3. End, Middle and Single sections available
4. Inspection Cover for Center Sections Optional

1 Arch St
PO Box 387
Putnam, CT 06260
(860)928-9365
F (860)928-9452
www.jbconcreteproducts.com