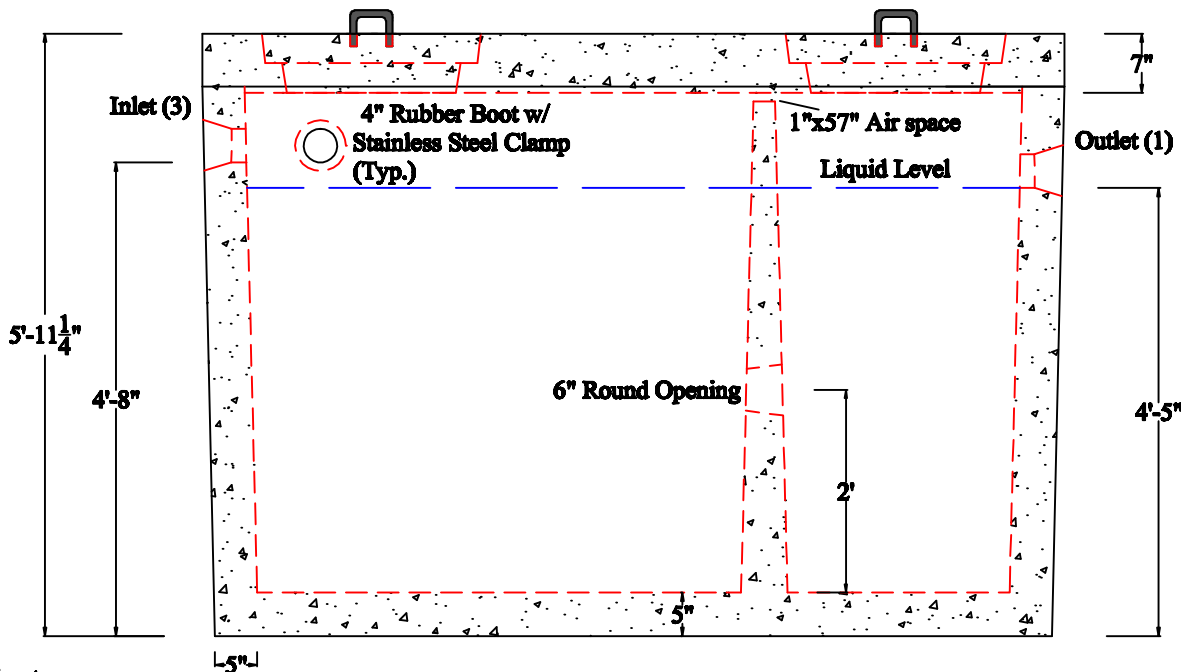
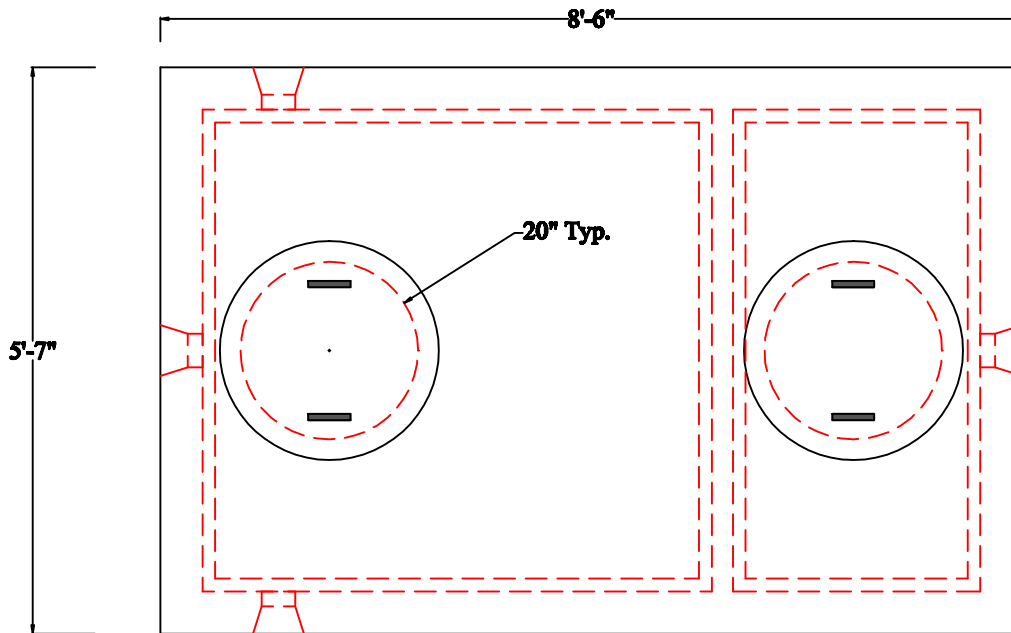


J.B. CONCRETE PRODUCTS, INC.

1000 GAL H-20 TANK 2 Comp.

REV. DATE:
Dec. 14, 2011

Drawing I.D.
ST_1000H20_2C



Notes:

1. CONFORMS TO ASTM C1227.
2. JOINT SEALED WITH BUTYL RUBBER SEALANT.
3. MINIMUM CONCRETE COMPRESSION STRENGTH 5,000 PSI AFTER 28 DAYS.
4. STATE APPROVED INLET AND OUTLET PIPE SEALS.
5. PVC Baffles INCLUDED TO BE INSTALLED BY CONTRACTOR
6. MEETS H-20 WHEEL LOAD
7. CHOICE OF EITHER STRAIGHT WALL MANHOLE OPENINGS
OR CONCRETE COVERS-CUST. TO SPECIFY

1 Arch St
PO Box 387
Putnam, CT 06260
(860)928-9365
F (860)928-9452
www.jbconcreteproducts.com