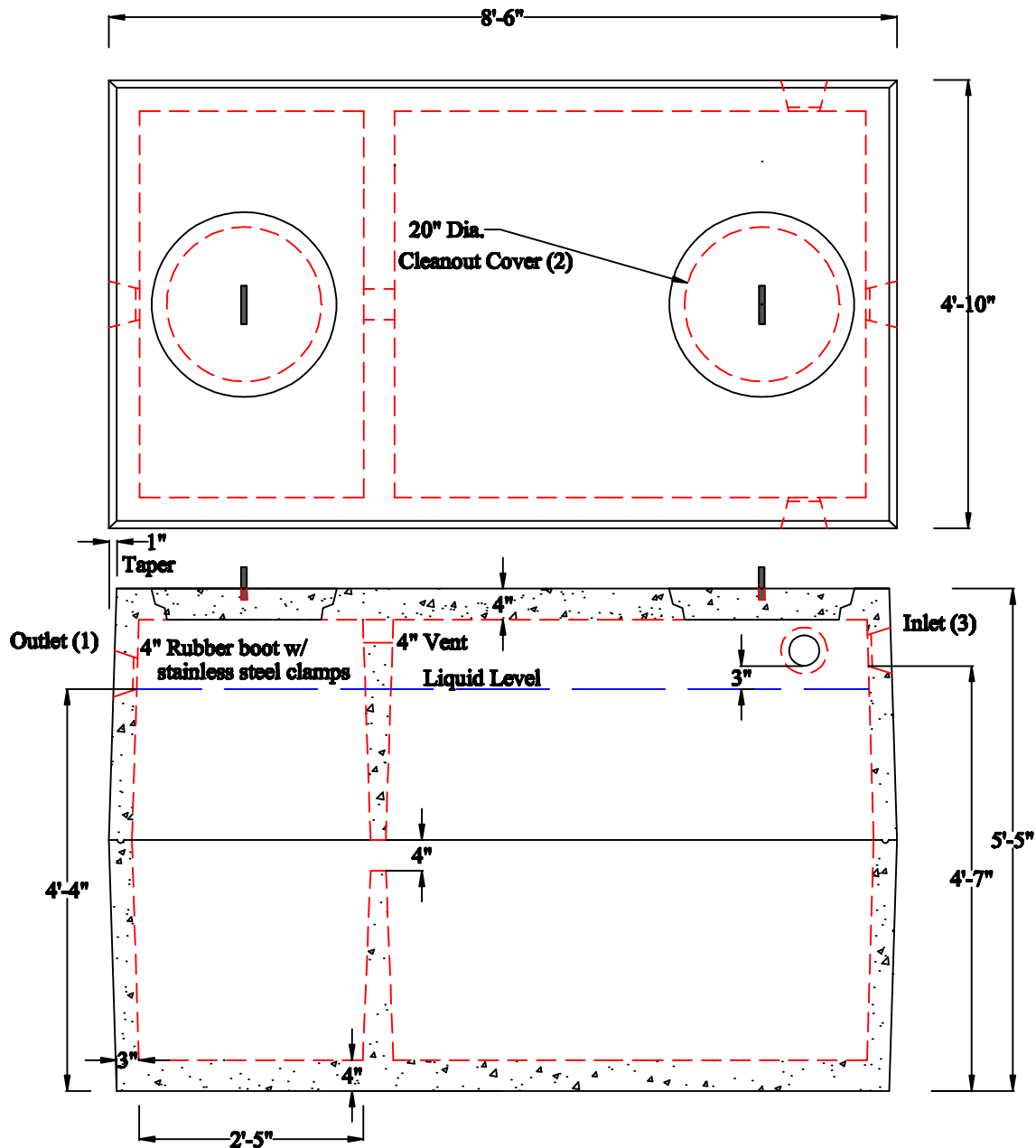


J.B. CONCRETE PRODUCTS, INC.

CT - 1000 GAL SEPTIC TANK - 2 Comp.

REV. DATE:
Jan. 19, 2011

Drawing I.D.
ST_CT1000_2C



Notes:

1. CONFORMS TO ASTM C1227.
2. JOINTS SEALED WITH BUTYL RUBBER SEALANT.
3. MINIMUM CONCRETE COMPRESSION STRENGTH 5,000 PSI AFTER 28 DAYS.
4. PVC Baffles INCLUDED TO BE INSTALLED BY CONTRACTOR.
5. OUTLET FILTER OPTIONAL.
6. STATE APPROVED INLET AND OUTLET PIPE SEALS.

1 Arch St
PO Box 387
Putnam, CT 06260
(860)928-9365
F (860)928-9452
www.jbconcreteproducts.com