

J.B. CONCRETE PRODUCTS, INC.

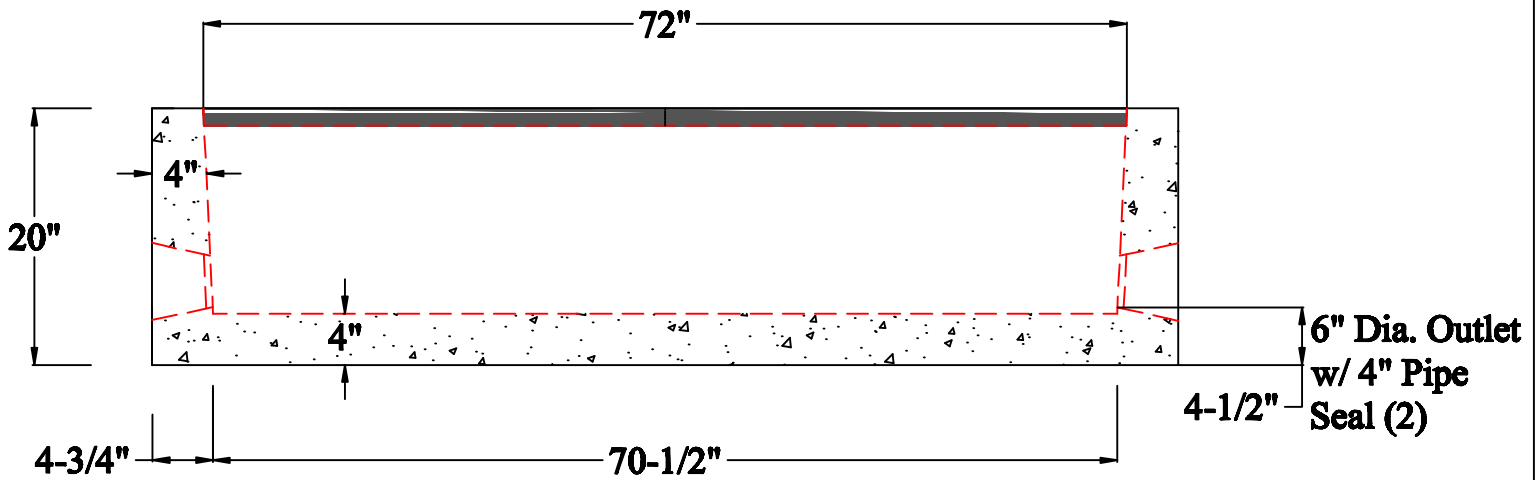
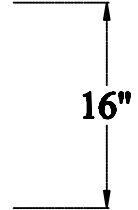
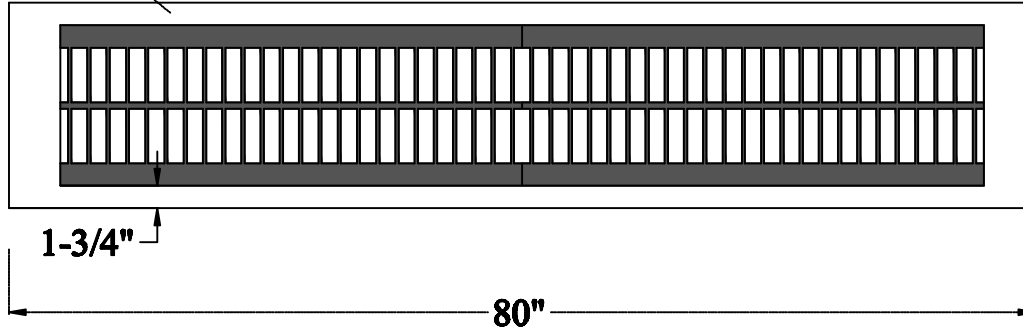
TRENCH DRAIN

DATE:
Jan. 3, 2008

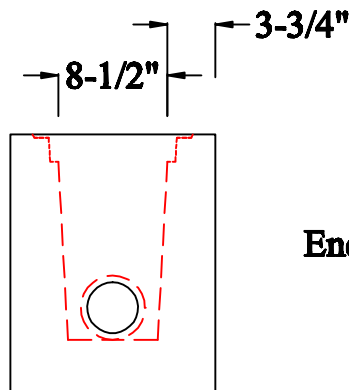
Drawing I.D.
TRENCH_6

9"X2" Bar Grating

Top View



Side View



End View

Notes:

1. AVAILABLE IN 6' SECTIONS.
2. AVAILABLE IN END, MIDDLE OR SINGLE SECTIONS
3. MINIMUM CONCRETE COMPRESSION STRENGTH 5,000 PSI AFTER 28 DAYS.

1 Arch St
PO Box 387
Putnam, CT 06260
(860)928-9365
F (860)928-9452
www.jbconcreteproducts.com