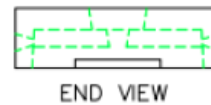
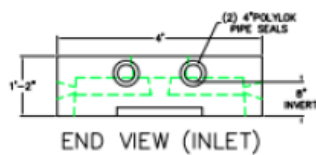
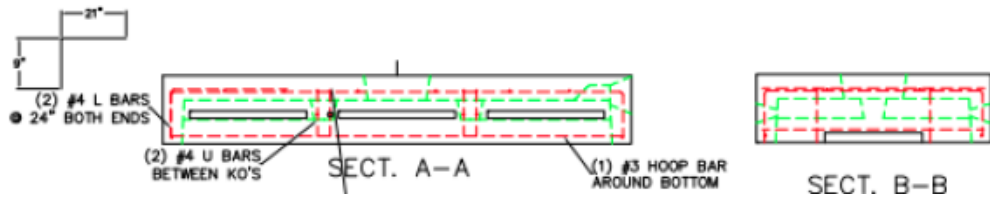
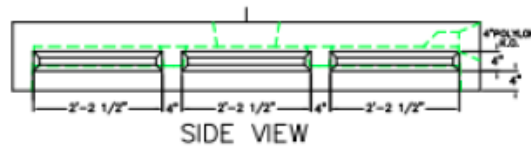
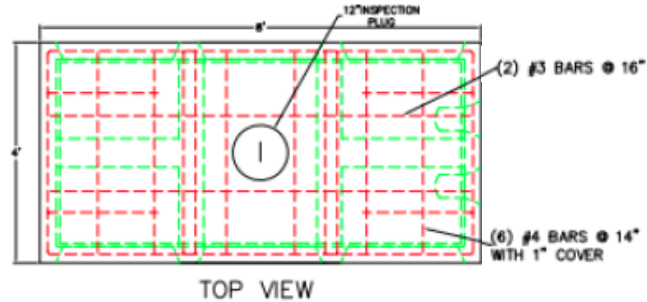


# J.B. CONCRETE PRODUCTS, INC.

CTL12 - 14" Leaching Chamber

DATE:  
July 1, 2024

Drawing I.D.  
CTL12



## Notes:

1. Pipe inlet for 4" diameter pipe seals
2. Reinforcing steel deformed bars conform to latest ASTM A615 Grade 60
3. Concrete compressive strength 5,000 PSI at 28 days
4. Section is cast monolithically
5. Designed for HS-20 loading with 12" to 48" of earth cover

1 Arch St  
PO Box 387  
Putnam, CT 06260  
(860)928-9365  
F (860)928-9452  
[www.jbconcreteproducts.com](http://www.jbconcreteproducts.com)