

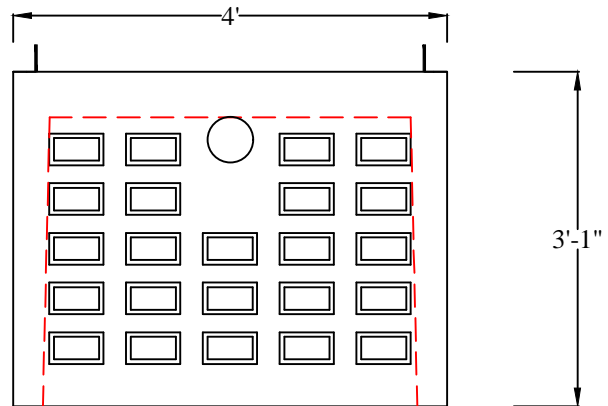
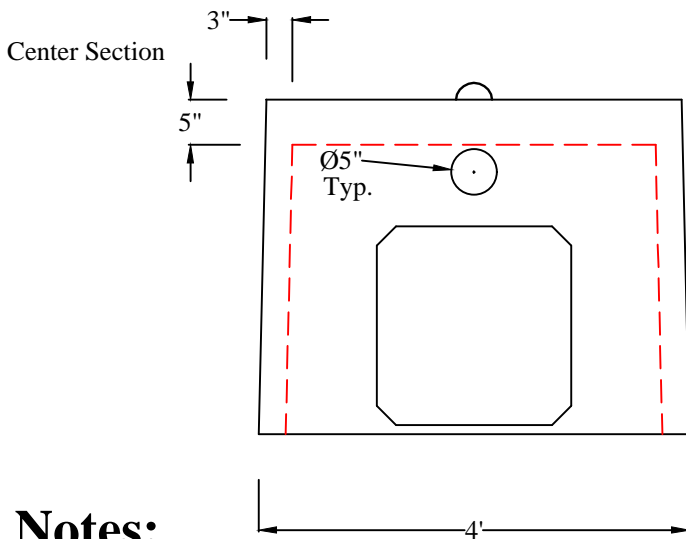
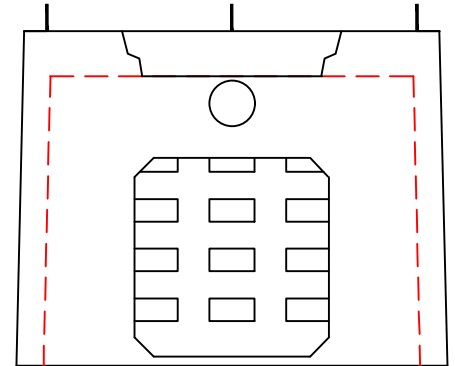
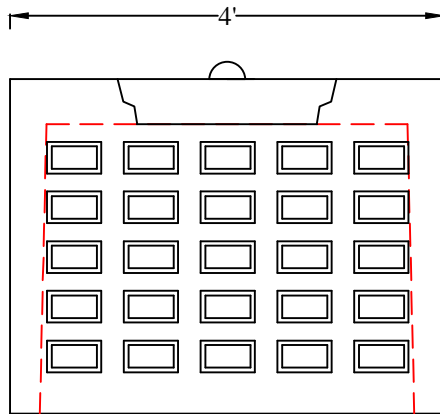
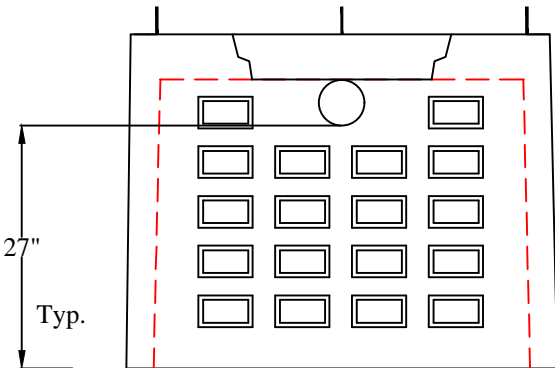
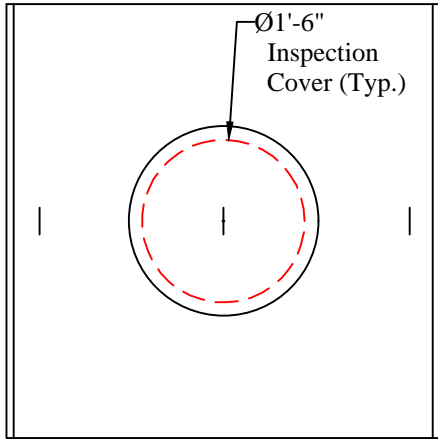
# J.B. CONCRETE PRODUCTS, INC.

4'x4'x3' GALLEY

DATE:  
Jan. 3, 2008

Drawing I.D.  
GALLEY\_3

End Section



## Notes:

1. H2O load rated
2. Minimum concrete compression strength 5,000 PSI after 28 days.
3. End & Middle sections available
4. Capacity approx. 250 gal. ea.
5. Approx. 2,100 LBS

1 Arch St  
PO Box 387  
Putnam, CT 06260  
(860)928-9365  
F (860)928-9452  
www.jbconcreteproducts.com